

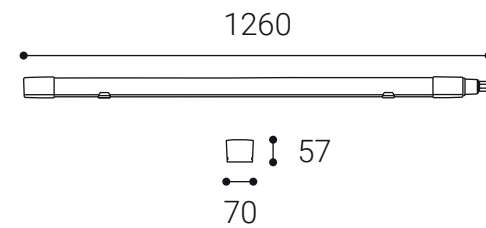


LEO II
DUSTPROOF LAMP



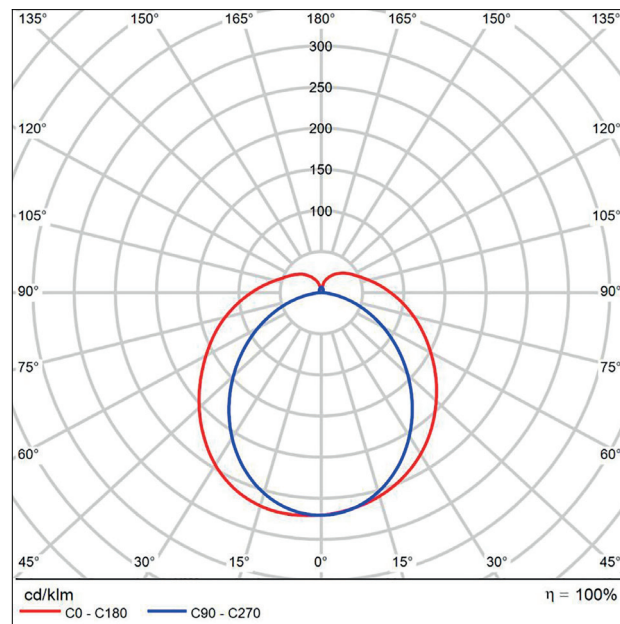
Dustproof lamp with IP66 protection. Available in 2 versions of one length - the 1st version is an end light for continuous installation of several lights or for independent installation, and the 2nd version is a light designed for continuous installation. This lamp already has continuous cabling (marking LK). Light source - LED SMD. Both the lamp and the diffuser are made of polycarbonate. Available in white. Use - general lighting in public and commercial spaces, including dusty and damp spaces (garages, parking lots, warehouses, industrial spaces).





Luminous intensity distribution diagram

1330

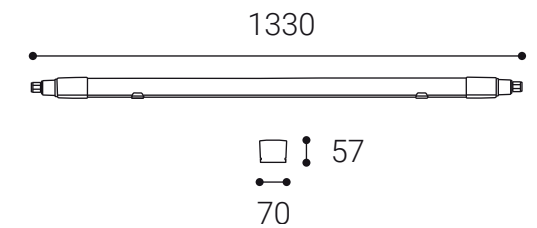


LEO II 120

Light source: **40W**
Color temperature: **3000K/4000K/5700K**
Lumens output: **4400 lm**

CRI: **> 80**
Optics: **120°**
IP Rating: **66**

Color: **WHITE / RAL 7047**



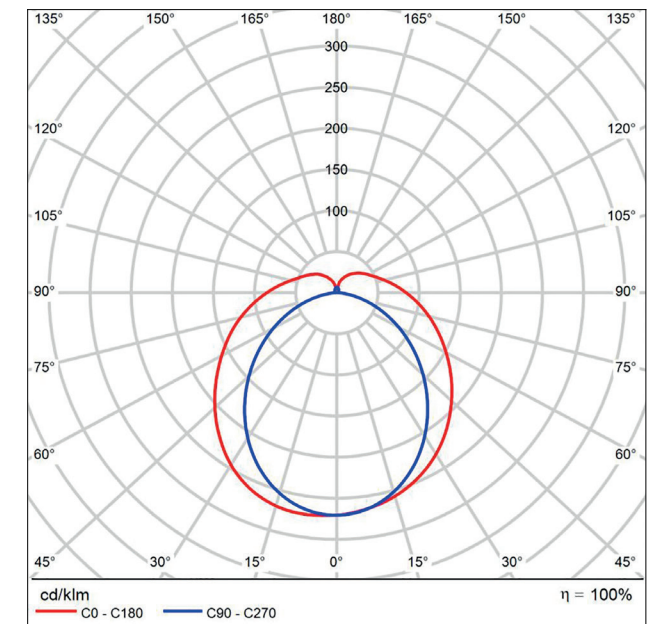
Luminous intensity distribution diagram

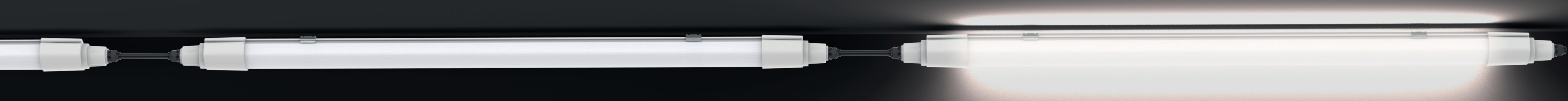
LEO II 120 LK

Light source: **40W**
Color temperature: **3000K/4000K/5700K**
Lumens output: **4400 lm**

CRI: **> 80**
Optics: **120°**
IP Rating: **66**

Color: **WHITE / RAL 7047**





Smart end cap & push terminal for toolless fast wiring

Waterproof end cap

3-pole terminal blok

4000 K

3000K

5700 K

3CCT changeable

Broad lightning effect
Linkable Available

110LM/V



www.led2.eu